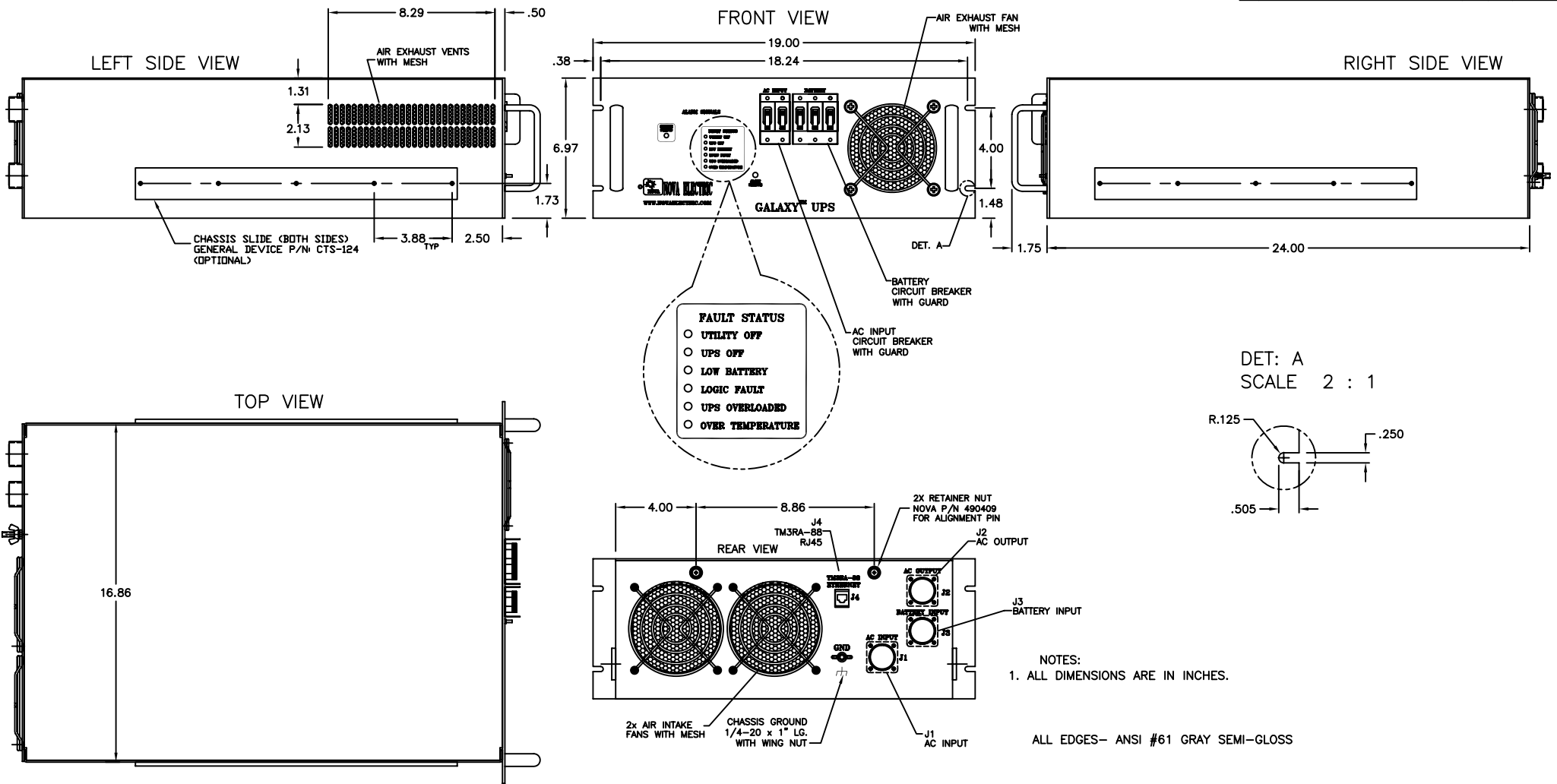


REVISIONS				
LTR	DESCRIPTION	BY	APR	DATE



NOTES:  
 1. ALL DIMENSIONS ARE IN INCHES.  
 ALL EDGES- ANSI #61 GRAY SEMI-GLOSS

CONNECTORS PIN DESIGNATION

J1 AC INPUT

MS3102R20-19P	
PIN	DESCRIPTION
A	LINE
B	NEUTRAL
C	GND

J2 AC OUTPUT

MS3102R20-19S	
PIN	DESCRIPTION
A	LINE
B	NEUTRAL
C	GND

J3 BATTERY INPUT

MS3102R20-24T	
DESCRIPTION	
DC +	

<small>UNLESS OTHERWISE SPECIFIED:          DIMENSIONS ARE IN INCHES          FRACTIONS DECIMALS ANGLES          - .001± .002 ±.50°</small>	<small>THIS DRAWING CONTAINS          PROPRIETARY INFORMATION AND          MAY NOT BE REPRODUCED          WITHOUT THE PERMISSION          OF NOVA ELECTRIC.</small>		<small>NOVA ELECTRIC          A DIV. OF TECHNOLOGY DYNAMICS INC.          100 SCHOOL STREET          BERGENFIELD, N.J. 07621-2915</small>	
			<small>TITLE: OUTLINE DRAWING, UPS          GRSLPFC11-5K SERIES</small>	
<small>MATERIAL: -</small>	<small>DRAWN: V.K. DATE: 10/9/07          CHECKED: B.T. DATE: 10/9/07          APPROVED: A.L. DATE: 10/9/07</small>	<small>SIZE: D</small>	<small>9981011</small>	<small>REV: -</small>
<small>HTTP://WWW.NOVAELECTRIC.COM</small>		<small>SCALE: NONE</small>	<small>CAGE: 29019</small>	<small>SHEET 1 OF 1</small>