



# RUPS 2000

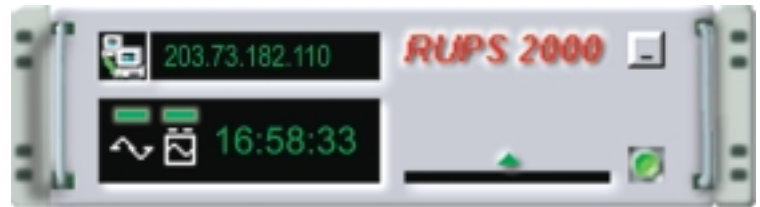
Operate in coordinate with subsidiary software "ClientMate" will enable clients PC automatic saving files and shutdown.

*RUPS 2000 is designed for Contact Closure UPS  
ClientMate is designed for Smart/Contact Closure UPS*

## Operating Systems Supported

### RUPS 2000:

Novell NetWare  
MS-DOS  
Microsoft Windows v3.1  
Microsoft Windows 95  
Microsoft Windows 98  
Microsoft Windows NT  
Microsoft Windows 2000  
Microsoft Windows ME  
Microsoft Windows XP  
ARTISOFT LANtastic  
Microsoft LAN Manager  
IBM LAN Server  
Linux



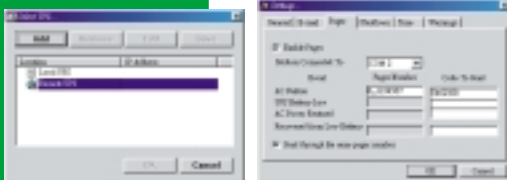
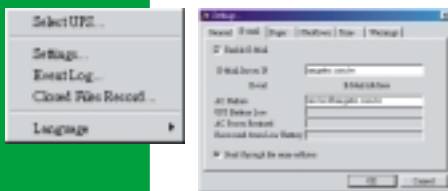
**RUPS 2000 is one of UPS monitoring software that enable continuously checking the status of AC power and UPS battery conditions. It also get into server full play function if combine subsidiary software "ClientMate". ClientMate access all clients PC monitoring UPS and under safety protection synchronously.**

**When AC power failure or UPS battery low, RUPS 2000 will automatic save files and shutdown system, also send email or call pager for notification at same time. Meanwhile, which clients PC installed ClientMate also following for safety shutdown.**

**Furthermore, RUPS 2000 support Windows NT Service function, it enable Windows NT Server boot up without employing on-site login it for efficient management.**

**ClientMate is subsidiary software supports RUPS 2000, UPSilon 2000 and SNMP Agent. As workstation software, it is able to auto detect host in network and monitor main UPS status. In the floating status/alert display, user can real-time monitor server's UPS status, in case of any power event, ClientMate will auto save files and shutdown operating system safety.**

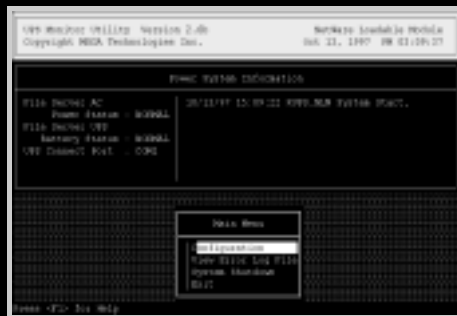
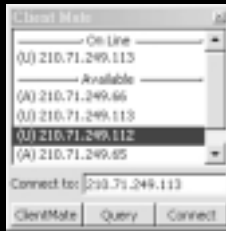
**In the Internet world, it is more necessary to have 24-hours of message receiving and system protection. The strong features of RUPS 2000 and ClientMate will be the best solution for your UPS.**



# RUPS 2000

## ClientMate

RUPS 2000 Specifications							
Operating System Supported	Windows 95,98,NT,2000, ME, XP						
<b>New Features</b>							
32-bit programming	✓						
Multi-Language expansion	✓						
Auto email notification	✓						
Auto pager notification	✓						
Uses TCP/IP or internet for remote UPS monitoring	✓						
File saving and OS shutdown at client workstation	✓						
Windows NT Service Function supports	✓						
Executing command file before system shutdown	✓						
Operating System Supported	MS-DOS	Windows 3.1	Windows 95/98/NT/2000/ME/XP	Novell Netware	LAN Server	LANtastic/ LAN Manager	Linux
<b>Original Features</b>							
Detecting power failure & UPS battery low	✓	✓	✓	✓	✓	✓	✓
Automatic system shutdown	✓	✓	✓	✓	✓	✓	✓
Automatic UPS shutdown	✓	✓	✓	✓	✓	✓	✓
UPS turn off delay time	✓	✓	✓	✓	✓	✓	✓
Specify interval warning messages	✓	✓	✓	✓	✓	✓	✓
UPS/power history events log	✓	✓	✓	✓	✓	✓	✓
Display power & UPS message in local system	✓	✓	✓	✓	✓	✓	✓
Programmable Exit key-string setting	✓						
Saving files before system shutdown	✓		✓				
Provide Night-Off function				✓			✓



### RUPS 2000 Features

- UPS event displayed - such as AC fail, Battery low (for Windows)
- Local control via standard RS-232 port
- Remote control through TCP/IP
- Power failure and battery low detection
- Emergency shutdown system after battery low detected
- Execute in tray area and run in background (for Windows)
- Multiple language
- Execute command file
- Email and pager notification
- Orderly shutdown operating system before UPS battery reserve is exhausted
- Auto turn off UPS
- Broadcast and record power abnormal status
- Programmable shutdown timer and warning period
- Disable user login during last minute before shutdown on File Server
- Provide function of Night-Off on Netware server
- Provides html formatted help
- Save and Exit applications in MS-DOS with user defined key strings

- Close applications and auto smart save files with or without filename in MS- Windows
- Review last shutdown information of Windows applications

### ClientMate Features

- Support RUPS 2000, UPSilon 2000 and SNMP Agent. Auto detect host in network
- Monitor Server UPS in Workstations
- Enable auto shutdown Workstations and auto saving files
- Closed files recorded
- Turn off UPS through SNMP Agent

### System Requirements

- A UPS with a contact closure signal port
- A 386, 486, 586 PC or higher
- A dedicated RS-232 serial port on your PC
- A possible LAN while using ClientMate

### Package Includes

- RUPS 2000 system CD
- One RUPS M2501 or M2603 cable
- Installation/User manual

### UPS Contact Closure Type I & II

