

ULTRA-LIGHTWEIGHT RUGGED GALAXY™ SERIES

COMPACT 3U-4U CHASSIS

1.6 - 4KW OUTPUT POWER

UNIVERSAL 120/240VAC PFC INPUT

SNMP COMMUNICATIONS

WHEN EVERY POUND COUNTS!



4U Model



3U Model
Retractable Battery Pack

APPLICATIONS

Utilizing field proven fully isolated topology, this family of rugged UPS is suitable for harsh environments and can be customized for unique applications including:

- Shelters
- Tactical Systems
- Shipboard power
- Servers
- MIL-STD-810
- MIL-S-901
- HMMWVs
- Mobile Systems
- Ground support
- Transit Cases
- MIL-STD-461
- MIL-STD-1399



NOVA ELECTRIC
www.novaelectric.com
novasales@theallpower.com



A Leader in DC-AC Inverter Technology since 1966 - 500VA to 500+KVA

MADE IN USA

ULTRA-LIGHTWEIGHT TRUE ONLINE RUGGED UPS

CAN MEET MIL-STD-810, MIL-STD-1399, MIL-S-901, MIL-STD-704, & MIL-STD-461 OPTIONALLY

APPLICATIONS

The rugged ultra light weight Galaxy Series UPS is designed to provide years of reliable service in harsh shock, vibration, humidity, and EMI environments. Applications include HMMVW, UAV, Shipboard, Submarine, Shelter, and Mobile Power Units.

OPTIONS

- Ruggedization against high shock, vibration, and humidity
- MS connector mates and multiple output outlets
- Chassis slide guides
- Internal electromechanical transfer switch
- Solid state transfer switch
- Additional battery back-up time
- Premium VRLA batteries with up to 10 year life
- Custom enclosures and configurations
- Additional run time via external batteries
- 3 Phase Input Power
- "LiFe" models feature internal Lithium Iron Phosphate batteries for substantial weight savings and longer runtime, including embedded Battery Management System
- EPO

ELECTRICAL SPECIFICATIONS

Input Voltage: 120/240 VAC Autorange PFC (3Ø input optional)
 Output Voltage: 120, 208, or 230 VAC (specify)
 Frequency: 50 / 60 / 400 Hz. Available
 Voltage Regulation: ± 2% NL to FL
 Frequency Regulation: ± 0.5% NL to FL
 Harmonic Distortion: 5% THD, 3% typical
 Input Power Factor: 0.95 or Better @ half-full load (except 3 phase input models)
 Efficiency at full load: 80-85% @ full load typical (batteries charged)
 Connections: MS Connector (mates optional)

NOMINAL DIMENSIONS

UPS Dimensions:
 19" Wide x 24" Deep (see model chart for height)

BATTERIES

Internal on all models except 5KVA
 External on 5KVA models
 External optional for increased run time
 Retractable Battery Drawer (Some Models)

ENVIRONMENTAL SPECIFICATIONS

UPS Operating Temp.: -20° to +50°C
 (Extended ranges optional - Consult factory)
 UPS Storage Temp. Range: -20° to +50°C (STD BAT)
 (Extended ranges optional: -40° to +80°C)
 (Premium VRLA Battery)
 Humidity: to 95% non-condensing
 Elevation: 15,000 Ft. (4,572m) operating;
 40,000 ft. (12,192m) non-operating
 Shock: 20g for 11mS
 Audible Noise: Less than 55 dbA at 5 ft.

STD. REMOTE CONTACTS/COMMUNICATIONS

SNMP V1.0 standard via CAT-5
 Major Alarm: Logic Fault, Low Battery, OT, UPS Overloaded, load on Utility (with optional transfer switch)
 Minor Alarm: Utility Off

PROTECTIVE FEATURES

AC & DC Input Circuit Breakers, Low Battery Shut Off, Overload & Thermal Protected, Input Under/Overvoltage Protected, Audible Alarm with Silence Switch.

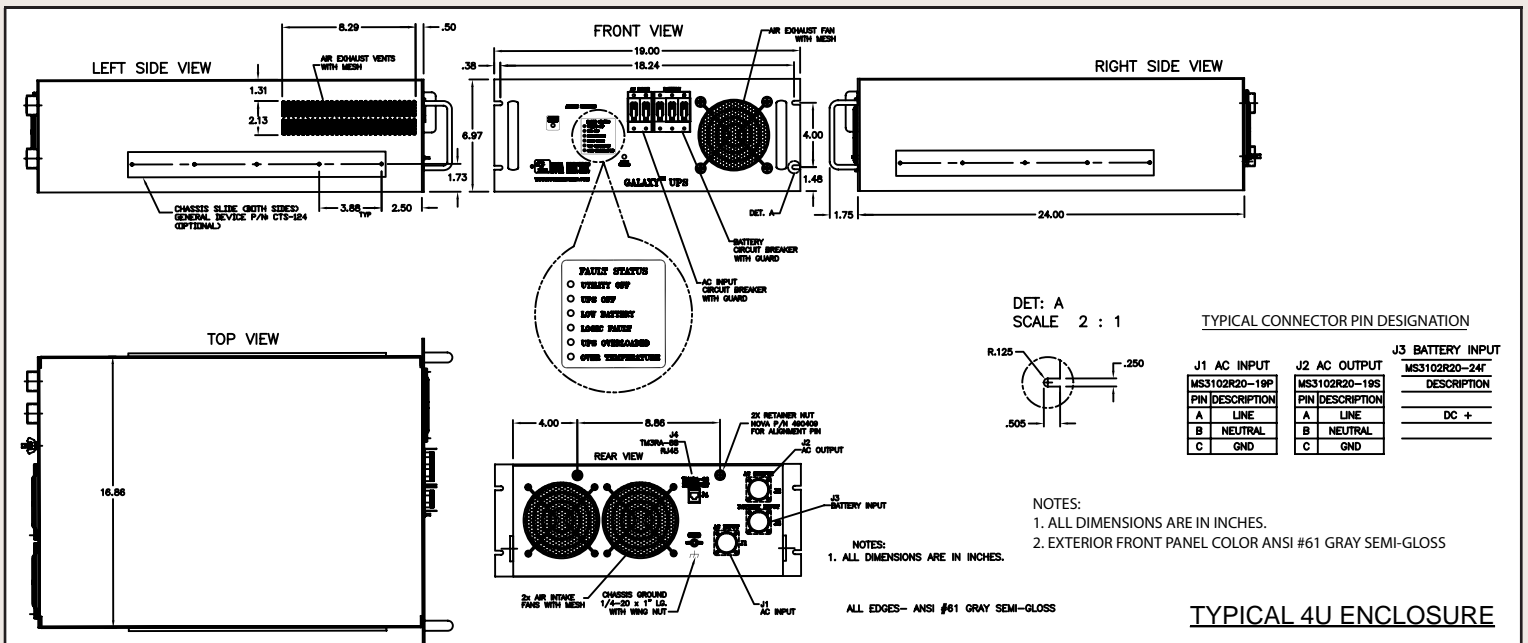
PARTIAL MODEL SELECTION

120 VAC OUTPUT MODELS

MODEL	KVA	KW	NOMINAL INPUT	INPUT AMPS	UPS LBS.	RUN TIME	HEIGHT
GRSLPFC11-5K60-240-120-4U	5	4	200-240VAC	26	45	EXT	4U
GRSLPFC11-3K60-120/240A-120-5M-4U	3	3	120-240VAC	30/15	95	5 min	4U
GRSLPFC11-3K60-120/240A-120-10M-4U	3	2.4	120-240VAC	24/12	95	7 min	4U
GRSLPFC11-3K60-120/240A-120-5M-3U	3	2.4	120-240VAC	24/12	80	5 min	3U
GRSLPFC11-2K60-120/240A-120-5M-3U	2	1.6	120-240VAC	16/8	80	7 min	3U

230 VAC OUTPUT MODELS

MODEL	KVA	KW	NOMINAL INPUT	INPUT AMPS	UPS LBS.	RUN TIME	HEIGHT
GRSLPFC11-5K50-230-230-5M-4U	5	4	200-240VAC	26	45	EXT.	4U
GRSLPFC11-3K50-120/240A-230-5M-4U	3	3	120-240VAC	30/15	95	5 min	4U
GRSLPFC11-3K50-120/240A-230-10M-4U	3	2.4	120-240VAC	24/12	95	7 min	4U
GRSLPFC11-3K50-120/240A-230-5M-3U	3	2.4	120-240VAC	24/12	80	5 min	3U
GRSLPFC11-2K50-120/240A-230-5M-3U	2	1.6	120-240VAC	16/8	80	7 min	3U



WEB : www.novaelectric.com
 E-Mail : novales@theallpower.com
 PHONE : (201) 385-0500 FAX : (201) 385-0702



NOVA ELECTRIC
 A Division of
 TECHNOLOGY DYNAMICS, INC.
 100 School St., Bergenfield NJ 07621



ISO 9001