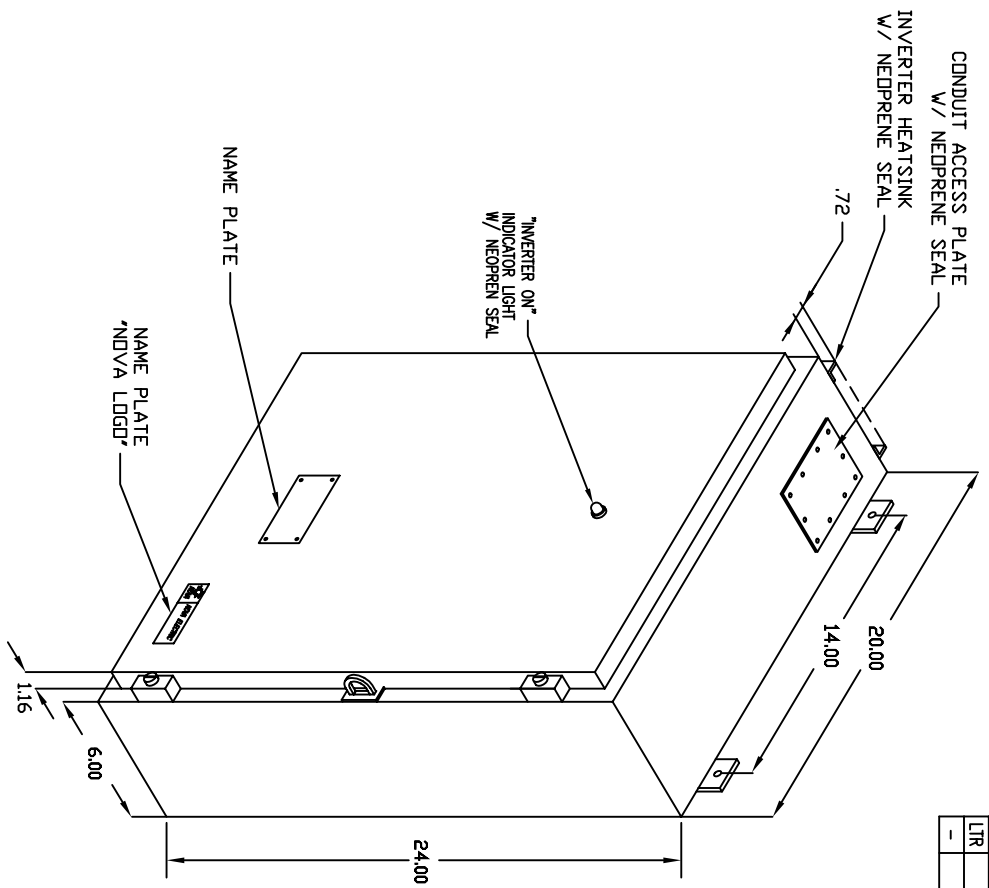


REVISIONS		
LTR	DESCRIPTION	DATE
-		



- NOTES:
1. INVERTER CABINET HAS (4) MTG EARS THE BOTTOM (2) CANNOT BE SEEN IN THIS VIEW
  2. APPROXIMATE WEIGHT: 170LBS
  3. FINISH: ANSI #61 GREYSEMIGLOSS
  4. ENCLOSURE TYPE: NEMA 12

UNLESS OTHERWISE SPECIFIED: DIMENSIONS ARE IN INCHES TOLERANCES: FRACTIONS .XX ± .02 DECIMALS .XXX ± .010 ANGLES ± .50°		THIS DRAWING CONTAINS PROPRIETARY INFORMATION AND MAY NOT BE REPRO- DUCED WITHOUT THE PER- MISSION OF NOVA ELECTRIC.		NOVA ELECTRIC A DIV. OF TECHNOLOGY DYNAMICS INC. 100 SCHOOL STREET BERGENFIELD, N.J. 07621-2915	
MATERIAL: JS		DRAWN: JS		DATE: 8-20-91	
FINISH: -		CHECKED: -		DATE: -	
NEXT ASSY. USED ON		APPROVED: -		DATE: -	
APPLICATION		SCALE: NONE		CAGE: 29019	
		SIZE: B		985891	
		TITLE: OUTLINE DRAWING		REV: -	
		GH 500VA-1KVA 240VDC INVERTER		SHEET 1 OF 1	