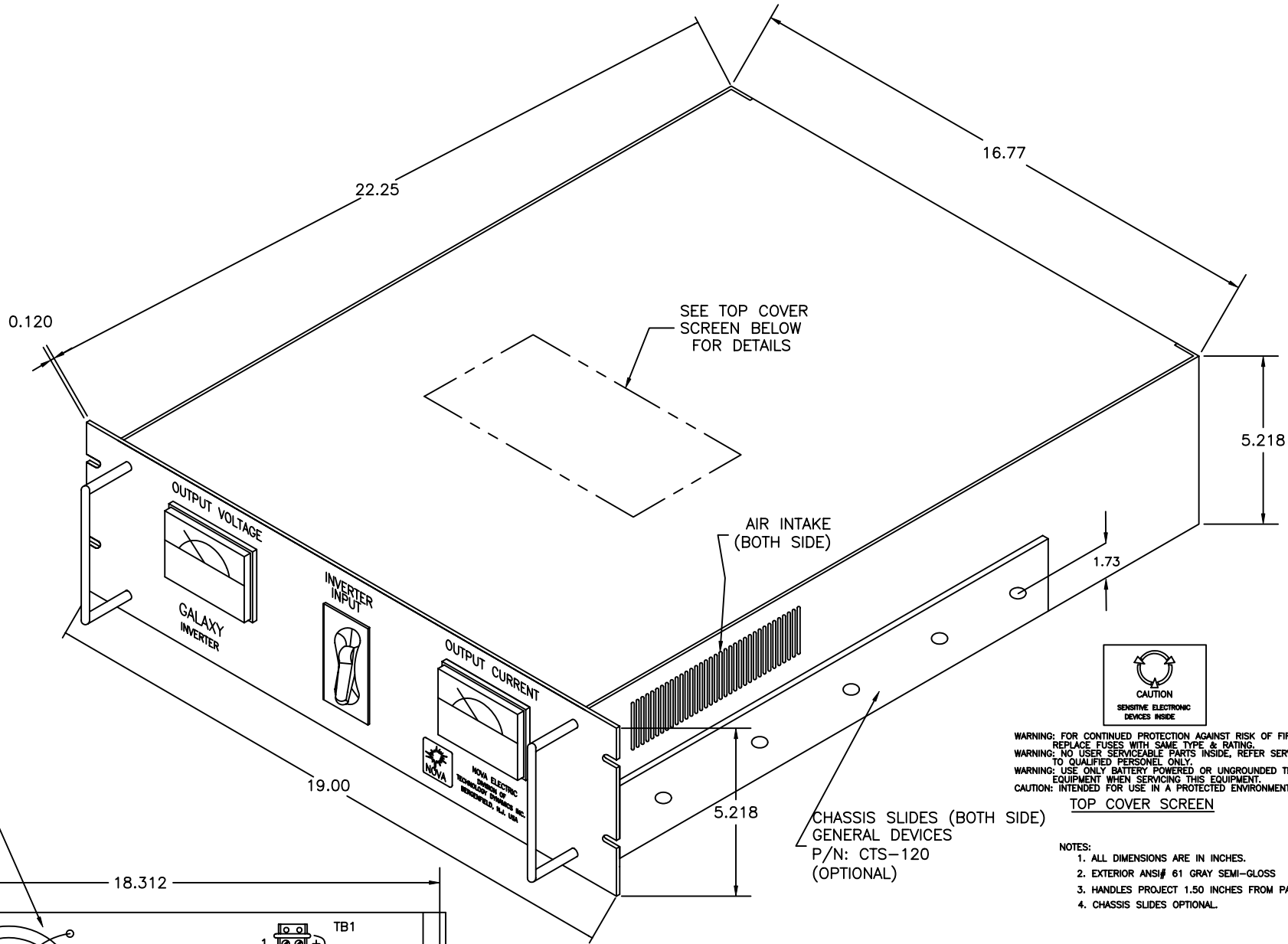


REVISIONS				
SYM	DESCRIPTION	BY	APP	DATE



SEE TOP COVER
SCREEN BELOW
FOR DETAILS

AIR INTAKE
(BOTH SIDE)



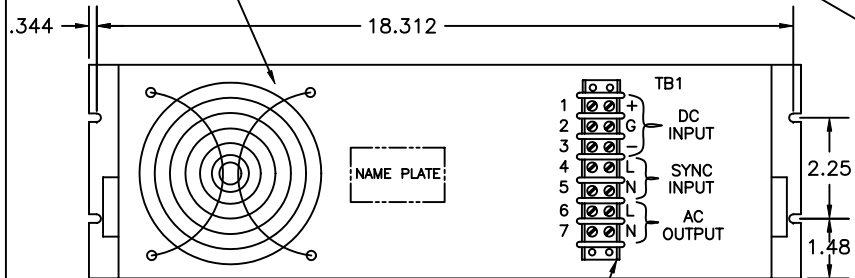
WARNING: FOR CONTINUED PROTECTION AGAINST RISK OF FIRE, REPLACE FUSES WITH SAME TYPE & RATING.
WARNING: NO USER SERVICEABLE PARTS INSIDE, REFER SERVICING TO QUALIFIED PERSONNEL ONLY.
WARNING: USE ONLY BATTERY POWERED OR UNGROUNDED TEST EQUIPMENT WHEN SERVICING THIS EQUIPMENT.
CAUTION: INTENDED FOR USE IN A PROTECTED ENVIRONMENT.

TOP COVER SCREEN

- NOTES:
1. ALL DIMENSIONS ARE IN INCHES.
 2. EXTERIOR ANSII# 61 GRAY SEMI-GLOSS
 3. HANDLES PROJECT 1.50 INCHES FROM PANEL SURFACE.
 4. CHASSIS SLIDES OPTIONAL.

CHASSIS SLIDES (BOTH SIDE)
GENERAL DEVICES
P/N: CTS-120
(OPTIONAL)

AIR EXHAUST FAN



REAR VIEW
TERMINAL BLOCK 7-142
SCREW SIZE #8-32

UNLESS OTHERWISE SPECIFIED DIMENSIONS ARE IN INCHES. TOLERANCES: FRAC. DEC. ANGLES +/-1/64XX=+/-02 +/--2 XXX=+/--.005DEG		THIS DRAWING CONTAINS PROPRIETARY INFORMATION AND MAY NOT BE REPRODUCED WITHOUT THE PERMISSION OF NOVA ELECTRIC.		NOVA ELECTRIC A DIV. OF TECHNOLOGY DYNAMICS INC. 100 SCHOOL STREET BERGENFIELD, N.J. 07621-2915	
MATERIAL: N/A	FINISH: N/A	DRAWN BY: ZIN	DATE 1-15-02	TITLE: OUTLINE DRAWING TYPICAL "GS" 1-2KVA RACK MOUNT INVERTER	
www.novaelectric.com		CHECKED BY: MY	DATE 1-15-02	SIZE: C	REV. -
SCALE: NTS		CAGE: 29019		SHEET 1 OF 1	